

R E S I L I O N



RESIDENCE

| 樂 居 苑 |

CONDOMINIUM
FLOOR PLANS & SPECIFICATIONS

	Unit Number	Type	Size	Sqft
LEVEL 15	15-12	Type B2a	1,159	
	15-11	Type B1a	1,199	
	15-10	Type C1a	2,051	
	15-09	Type C1b	2,022	
	15-08	Type A3a	1,149	
	15-07	Type A3b	1,149	
LEVEL 13A	13A-12	Type B2a	1,159	
	13A-11	Type B1a	1,199	
	13A-10	Type A3c	1,178	
	13A-09	Type A3b	1,149	
	13A-08	Type A3a	1,149	
	13A-07	Type A3b	1,149	
LEVEL 13	13-12	Type B2a	1,159	
	13-11	Type B1a	1,199	
	13-10	Type A3c	1,178	
	13-09	Type A3b	1,149	
	13-08	Type A1d	1,149	
	13-07	Type A1c	1,149	
LEVEL 12	12-12	Type B2a	1,159	
	12-11	Type B1a	1,199	
	12-10	Type A3c	1,178	
	12-09	Type A3b	1,149	
	12-08	Type A1d	1,149	
	12-07	Type A1c	1,149	
LEVEL 11	11-12	Type B2a	1,159	
	11-11	Type B1a	1,199	
	11-10	Type A2a	1,149	
	11-09	Type A1c	1,149	
	11-08	Type A3a	1,149	
	11-07	Type A3b	1,149	
LEVEL 10	10-12	Type B2a	1,159	
	10-11	Type B1a	1,199	
	10-10	Type A2c	1,178	
	10-09	Type A1c	1,149	
	10-08	Type A3a	1,149	
	10-07	Type A3b	1,149	
LEVEL 9	9-12	Type B2a	1,159	
	9-11	Type B1a	1,199	
	9-10	Type A3c	1,178	
	9-09	Type A3b	1,149	
	9-08	Type A1d	1,149	
	9-07	Type A1c	1,149	
LEVEL 8	8-12	Type B2a	1,159	
	8-11	Type B1a	1,199	
	8-10	Type A3c	1,178	
	8-09	Type A3b	1,149	
	8-08	Type A1d	1,149	
	8-07	Type A1c	1,149	
LEVEL 7	7-12	Type B2a	1,159	
	7-11	Type B1a	1,199	
	7-10	Type A2a	1,149	
	7-09	Type A1c	1,149	
	7-08	Type A3a	1,149	
	7-07	Type A3b	1,149	
LEVEL 6	6-12	Type B2a	1,159	
	6-11	Type B1a	1,199	
	6-10	Type A2c	1,178	
	6-09	Type A1c	1,149	
	6-08	Type A3a	1,149	
	6-07	Type A3b	1,149	
LEVEL 5	5-12	Type B2a	1,159	
	5-11	Type B1a	1,199	
	5-10	Type A3c	1,178	
	5-09	Type A3b	1,149	
	5-08	Type A1d	1,149	
	5-07	Type A1c	1,149	
LEVEL 3A	3A-12	Type B2a	1,159	
	3A-11	Type B1a	1,199	
	3A-10	Type A3c	1,178	
	3A-09	Type A3b	1,149	
	3A-08	Type A1d	1,149	
	3A-07	Type A1c	1,149	
LEVEL 3	3-12	Type B2a	1,159	
	3-11	Type B1a	1,199	
	3-10	Type A2a	1,149	
	3-09	Type A1c	1,149	
	3-08	Type A3a	1,149	
	3-07	Type A3b	1,149	
LEVEL 2	2-12	Type B2a	1,159	
	2-11	Type B1a	1,199	
	2-10	Type A2a	1,149	
	2-09	Type A1c	1,149	
	2-08	Type A3a	1,149	
	2-07	Type A3b	1,149	

LEVEL 1	
LEVEL G	
LEVEL LG1	
LEVEL LG2	
LEVEL LG3	
LEVEL LG4	

B	B	A	A	A	A
15-12	15-11	15-10	15-09	15-08	15-07
Type B2a	Type B1a	Type C1a	Type C1b	Type A3a	Type A3b
1,159	1,199	2,051	2,022	1,149	1,149
13A-12	13A-11			13A-08	13A-07
Type B2a	Type B1a			Type A3a	Type A3b
1,159	1,199			1,149	1,149
13-12	13-11	13-10	13-09	13-08	13-07
Type B2a	Type B1a	Type A3c	Type A3b	Type A1d	Type A1c
1,159	1,199	1,178	1,149	1,149	1,149
12-12	12-11	12-10	12-09	12-08	12-07
Type B2a	Type B1a	Type A3c	Type A3b	Type A1d	Type A1c
1,159	1,199	1,178	1,149	1,149	1,149
11-12	11-11	11-10	11-09	11-08	11-07
Type B2a	Type B1a	Type A2a	Type A1c	Type A3a	Type A3b
1,159	1,199	1,149	1,149	1,149	1,149
10-12	10-11	10-10	10-09	10-08	10-07
Type B2a	Type B1a	Type A2c	Type A1c	Type A3a	Type A3b
1,159	1,199	1,178	1,149	1,149	1,149
9-12	9-11	9-10	9-09	9-08	9-07
Type B2a	Type B1a	Type A3c	Type A3b	Type A1d	Type A1c
1,159	1,199	1,178	1,149	1,149	1,149
8-12	8-11	8-10	8-09	8-08	8-07
Type B2a	Type B1a	Type A3c	Type A3b	Type A1d	Type A1c
1,159	1,199	1,178	1,149	1,149	1,149
7-12	7-11	7-10	7-09	7-08	7-07
Type B2a	Type B1a	Type A2a	Type A1c	Type A3a	Type A3b
1,159	1,199	1,149	1,149	1,149	1,149
6-12	6-11	6-10	6-09	6-08	6-07
Type B2a	Type B1a	Type A2c	Type A1c	Type A3a	Type A3b
1,159	1,199	1,178	1,149	1,149	1,149
5-12	5-11	5-10	5-09	5-08	5-07
Type B2a	Type B1a	Type A3c	Type A3b	Type A1d	Type A1c
1,159	1,199	1,178	1,149	1,149	1,149
3A-12	3A-11	3A-10	3A-09	3A-08	3A-07
Type B2a	Type B1a	Type A3c	Type A3b	Type A1d	Type A1c
1,159	1,199	1,178	1,149	1,149	1,149
3-12	3-11	3-10	3-09	3-08	3-07
Type B2a	Type B1a	Type A2a	Type A1c	Type A3a	Type A3b
1,159	1,199	1,149	1,149	1,149	1,149
2-12	2-11	2-10	2-09	2-08	2-07
Type B2a	Type B1a	Type A2a	Type A1c	Type A3a	Type A3b
1,159	1,199	1,149	1,149	1,149	1,149

	FACILITIES
	CARPARK
	CARPARK
	CARPARK
	CARPARK

LIFT LOBBY 1

A	A	B	B	B	B
15-06	15-05	15-03A	15-03	15-02	15-01
Type A1b	Type A1a	Type A1b	Type A2b	Type B1b	Type B2b
1,149	1,149	1,149	1,149	1,199	1,159
13A-06	13A-05	13A-03A	13A-03	13A-02	13A-01
Type A1b	Type A1a	Type A1b	Type A2d	Type B1b	Type B2b
1,149	1,149	1,149	1,178	1,199	1,159
13-06	13-05	13-03A	13-03	13-02	13-01
Type A1b	Type A1a	Type A1b	Type A2d	Type B1b	Type B2b
1,149	1,149	1,149	1,178	1,199	1,159
12-06	12-05	12-03A	12-03	12-02	12-01
Type A1b	Type A1a	Type A1b	Type A2d	Type B1b	Type B2b
1,149	1,149	1,149	1,178	1,199	1,159
11-06	11-05	11-03A	11-03	11-02	11-01
Type A1b	Type A1a	Type A1b	Type A2d	Type B1b	Type B2b
1,149	1,149	1,149	1,178	1,199	1,159
10-06	10-05	10-03A	10-03	10-02	10-01
Type A1b	Type A1a	Type A1b	Type A2b	Type B1b	Type B2b
1,149	1,149	1,149	1,149	1,199	1,159
9-06	9-05	9-03A	9-03	9-02	9-01
Type A1b	Type A1a	Type A1b	Type A2d	Type B1b	Type B2b
1,149	1,149	1,149	1,178	1,199	1,159
8-06	8-05	8-03A	8-03	8-02	8-01
Type A1b	Type A1a	Type A1b	Type A2d	Type B1b	Type B2b
1,149	1,149	1,149	1,178	1,199	1,159
7-06	7-05	7-03A	7-03	7-02	7-01
Type A1b	Type A1a	Type A1b	Type A2d	Type B1b	Type B2b
1,149	1,149	1,149	1,178	1,199	1,159
6-06	6-05	6-03A	6-03	6-02	6-01
Type A1b	Type A1a	Type A1b	Type A2b	Type B1b	Type B2b
1,149	1,149	1,149	1,149	1,199	1,159
5-06	5-05	5-03A	5-03	5-02	5-01
Type A1b	Type A1a	Type A1b	Type A2d	Type B1b	Type B2b
1,149	1,149	1,149	1,178	1,199	1,159
3A-06	3A-05	3A-03A	3A-03	3A-02	3A-01
Type A1b	Type A1a	Type A1b	Type A2d	Type B1b	Type B2b
1,149	1,149	1,149	1,178	1,199	1,159
3-06	3-05	3-03A	3-03	3-02	3-01
Type A1b	Type A1a	Type A1b	Type A2d	Type B1b	Type B2b
1,149	1,149	1,149	1,178	1,199	1,159
2-06	2-05	2-03A	2-03	2-02	2-01
Type A1b	Type A1a	Type A1b	Type A2b	Type B1a	Type B2b
1,149	1,149	1,149	1,149	1,199	1,159
1-06	1-05	1-03A	1-03	1-02	1-01
Type A1b	Type A1a	Type A1b	Type A2b	Type B1a	Type B2b
1,149	1,149	1,149	1,149	1,199	1,159

	FACILITIES
	CARPARK
	CARPARK
	CARPARK
	CARPARK

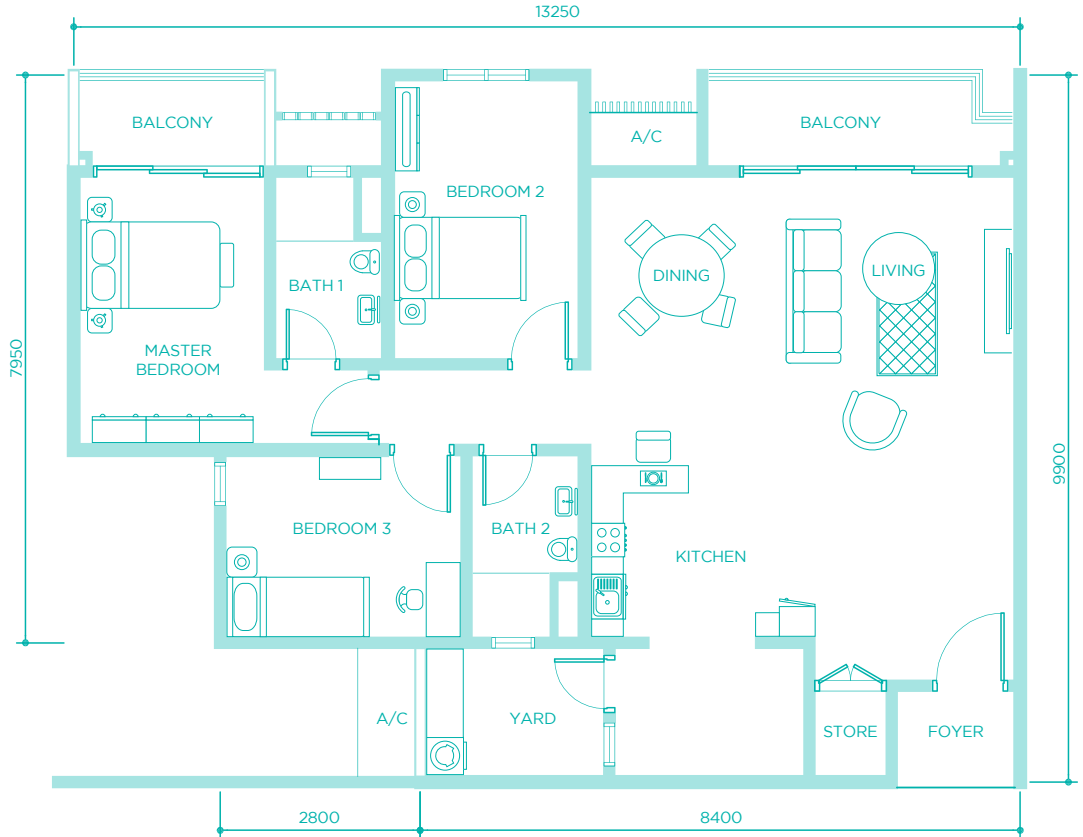
TYPE B1a

Parcel Area :
1 , 198.99 sqft

Accessories Parcel Area :
31.65 sqft

Unit Floor :
2, 3, 3a, 5, 6, 7, 8, 9, 10,
11, 12, 13, 13a, & 15

Block Floor Plan :



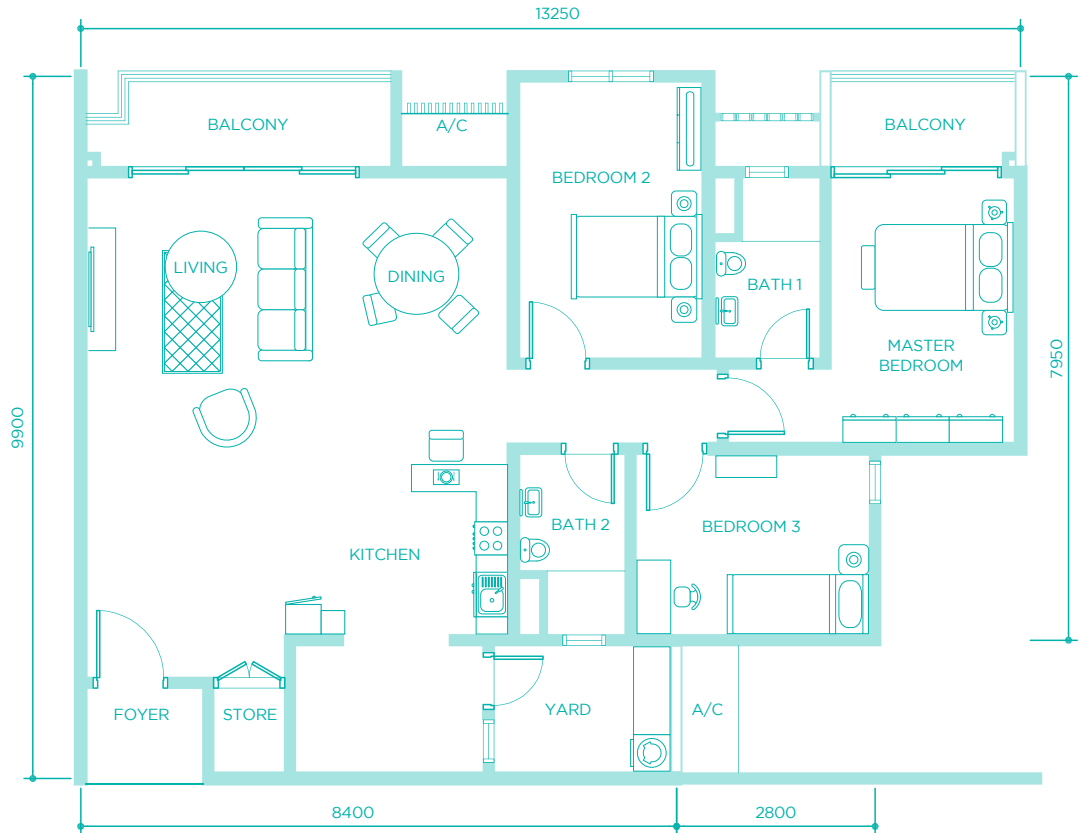
TYPE B1b

Parcel Area :
1, 198.99 sqft

Accessories Parcel Area :
31.65 sqft

Unit Floor :
1, 2, 3, 3a, 5, 6, 7, 8, 9, 10,
11, 12, 13, 13a, & 15

Block Floor Plan :



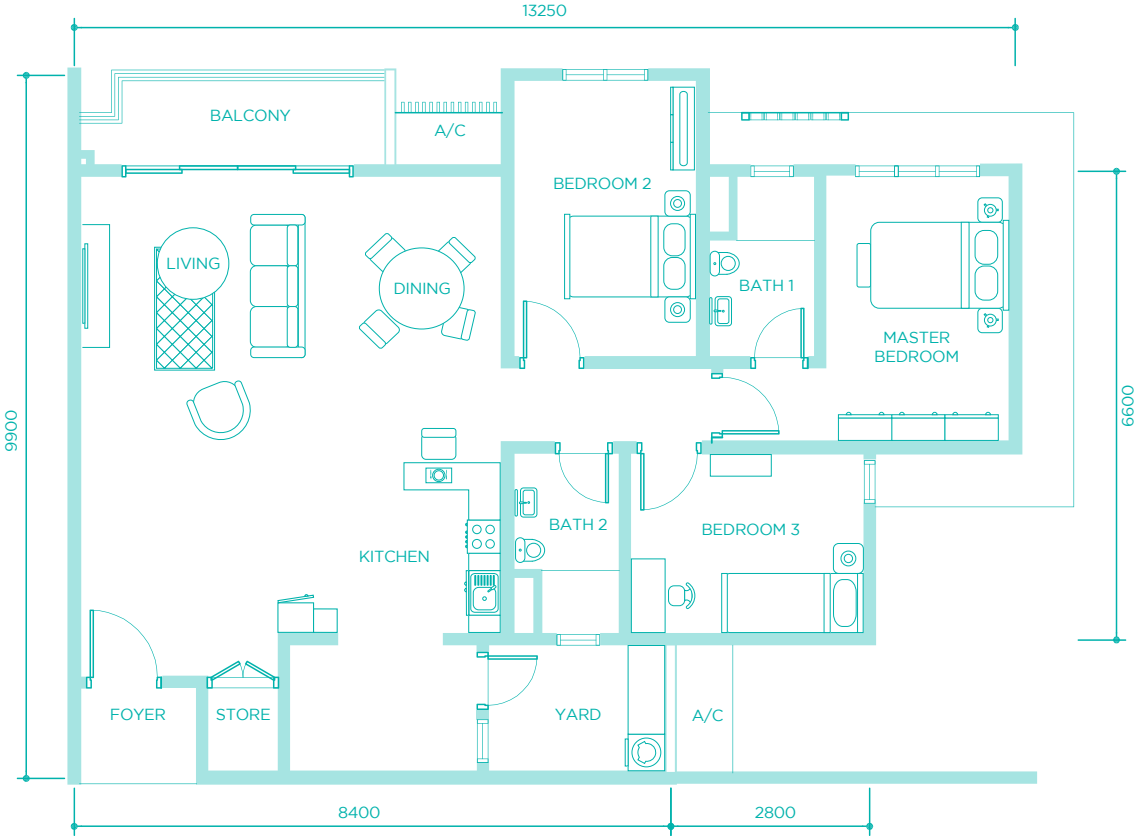
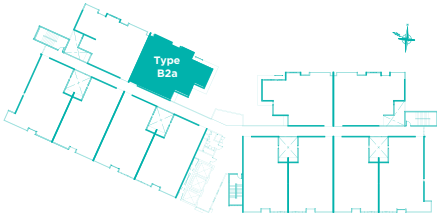
TYPE B2a

Parcel Area :
1,159.06 sqft

Accessories Parcel Area :
31.65 sqft

Unit Floor :
2, 3, 3a, 5, 6, 7, 8, 9, 10,
11, 12, 13, 13a & 15

Block Floor Plan :



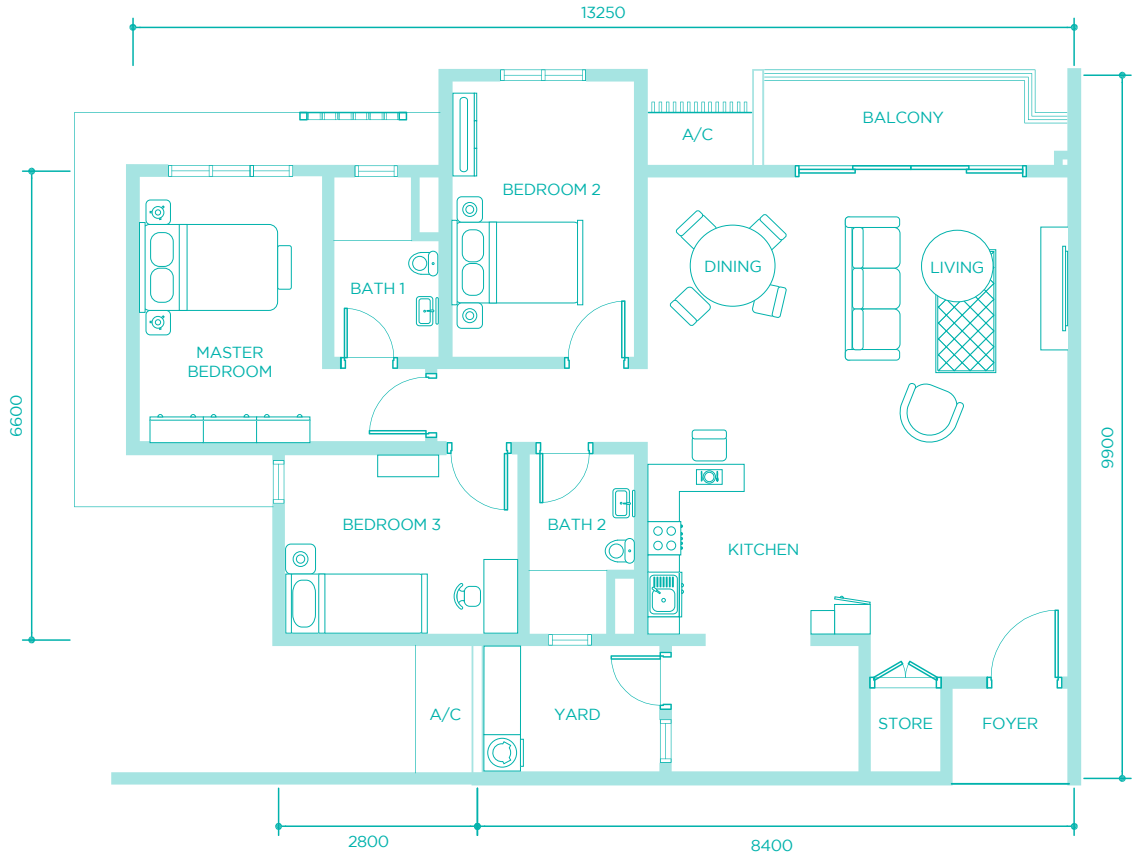
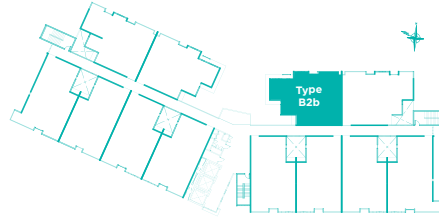
TYPE B2b

Parcel Area :
1,159.06 sqft

Accessories Parcel Area :
31.65 sqft

Unit Floor :
1, 2, 3, 3a, 5, 6, 7, 8, 9, 10,
11, 12, 13, 13a & 15

Block Floor Plan :



SPECIFICATIONS

TYPE B1/B2

Structure	:	Reinforced Concrete
Roof	:	Concrete Roof
Walls	:	Shear Wall with Skimcoat / Cement Sand Brick with Plastering
Windows	:	Aluminium Frame / Glass
Doors	:	Main Entrance - Metal Framed Fire - rated Timber Door Others - Metal Framed Timber Flush Doors
Ceiling Finishes	:	Skimcoat & Paint / Plaster board & Paint
Floor Finishes	:	Entrance/Foyer - Porcelain Tiles General Space 1 & 2 - Porcelain Tiles Room 1 & 2 - Porcelain Tiles Toilet 1 & 2 - Porcelain Tiles Yard/Utility - Porcelain Tiles Balcony/Lanai - Porcelain Tiles
Wall Finishes	:	Toilet 1 & 2 - Full Height Porcelain Tiles Kitchen - 1500mm Height Ceramic Tiles Other Walls - Plaster & Paint

Ironmongery : Selected quality locksets

Sanitary Installations : Kitchen Sink - 1
Wash Basin - 2
Shower Points - 2
Sitting WC - 2
Tap Points - 4

Electrical Installations :

ITEM	QUANTITY
Light Point	18
Power Point	16
Telephone Point	1
SMATV Point	2
Fan Point	4
Water Heater Point	2
Air Cond Point c/w Wiring & Piping	4
Distribution Board	1

03 9075 2288 • 03 9074 9206 • 013 336 4839 • 012 985 8803 • 016 210 1126 • 012 322 3353



Developer : Pancar Tulin Sdn Bhd (814156-U)

**BANDAR MAHKOTA CHERAS
SALES GALLERY**

Lot 1239, Jalan Puteri,
Section 1, Bandar Mahkota Cheras,
43200 Kajang, Selangor.

www.resilion.com.my
www.lionproperty.com.my



AJAMY06/1052

• Developer : Pancar Tulin Sdn Bhd (814156-U) • Developer's Address : Level 2, Lion Office Tower, No.1 Jalan Nagasari, 50200 Kuala Lumpur • Developer's Contact No.: 03 2143 2299 / 03 2143 2929 • Developer's Fax No. : 03 2148 9617 • Developer's License No. : 14570-3/03-2020-0222 (L) • Validity Date : 06/03/2018 – 05/03/2020 • Advertising & Sales Permit : 14570-3/03-2020-0222 (P) • Validity Date : 06/03/2018 – 05/03/2020 • Land Tenure : Freehold • Building Plan Approval No. : Bil (29) dlm. MPKJ 6/P/28/2015 • Approving Authority : Majlis Perbandaran Kajang • Expected Date of Completion : May 2021 (42 months from date of Sale & Purchase Agreement) • Encumbrance : Encumbered to RHB Investment Bank Berhad • Sekatan Kepentingan : Nil • Type of Property : Apartment • Estimated Built-up Area : 1,149 – 2,051 sf • Total Unit : 172 • Selling Price : RM 558,300 (min) – RM 966,500 (max) • Type of Property : Townhouse • Lot Size : 23' x 70' • Total Unit : 72 • Selling Price : RM 538,100 (min) – RM 634,200 (max) • 7% Bumiputera Discount